



# Student Assessment Program



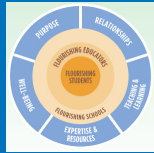
1

**ACSI**  
ADVANCING • ACCESS • ADVOCACY  
STRONGER TOGETHER

**Advancing**  
**Leading Christ-centered education toward excellence and flourishing**  
ACSI's assessment program provides a service that helps schools use testing data to improve instruction thereby advancing Christian education through school improvement.

2

## Flourishing Schools Culture Model



### ► Data-Driven Improvement

► Data is used to gauge school results and effectiveness, determine goal attainment, and address problems the school faces.

3

## Program Benefits

Discounted pricing

Christian school comparison scores

Consultation services

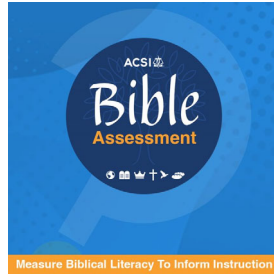
Prescheduled and custom faculty training

Participant networking through the ACSI Community

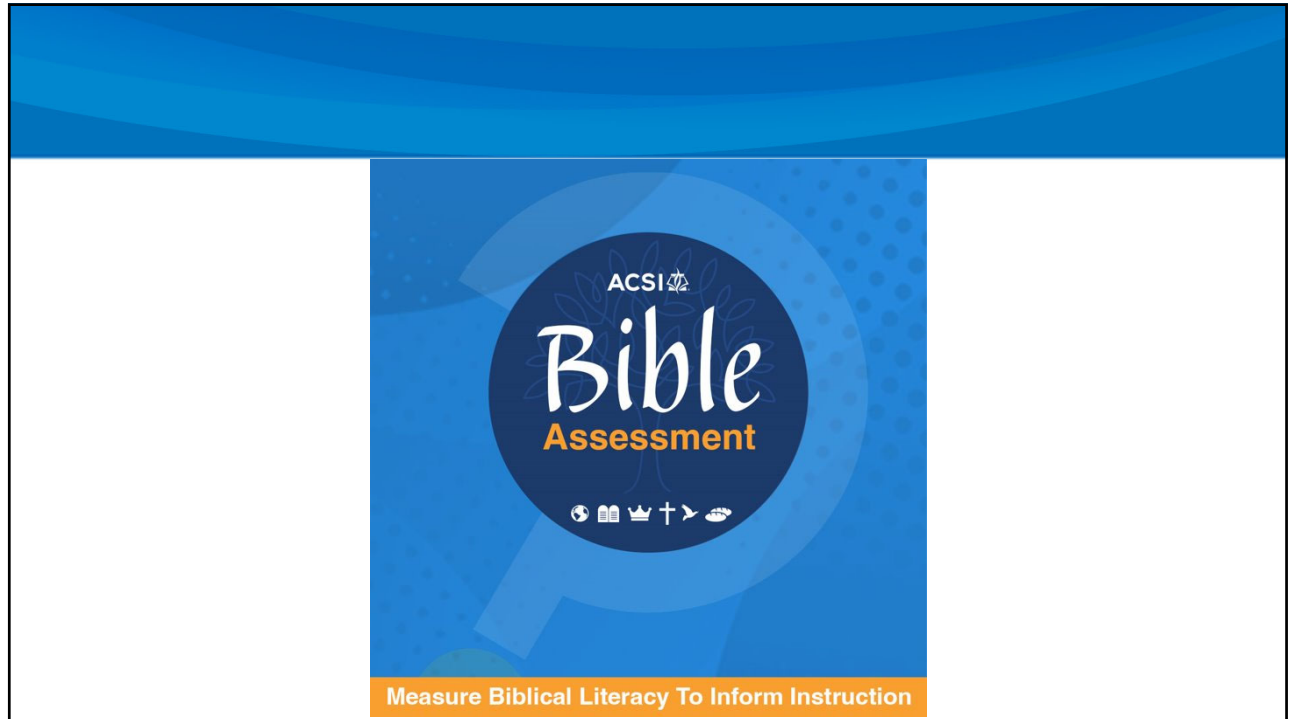
Access to test publisher and ACSI team members with the strength of a collective voice

4

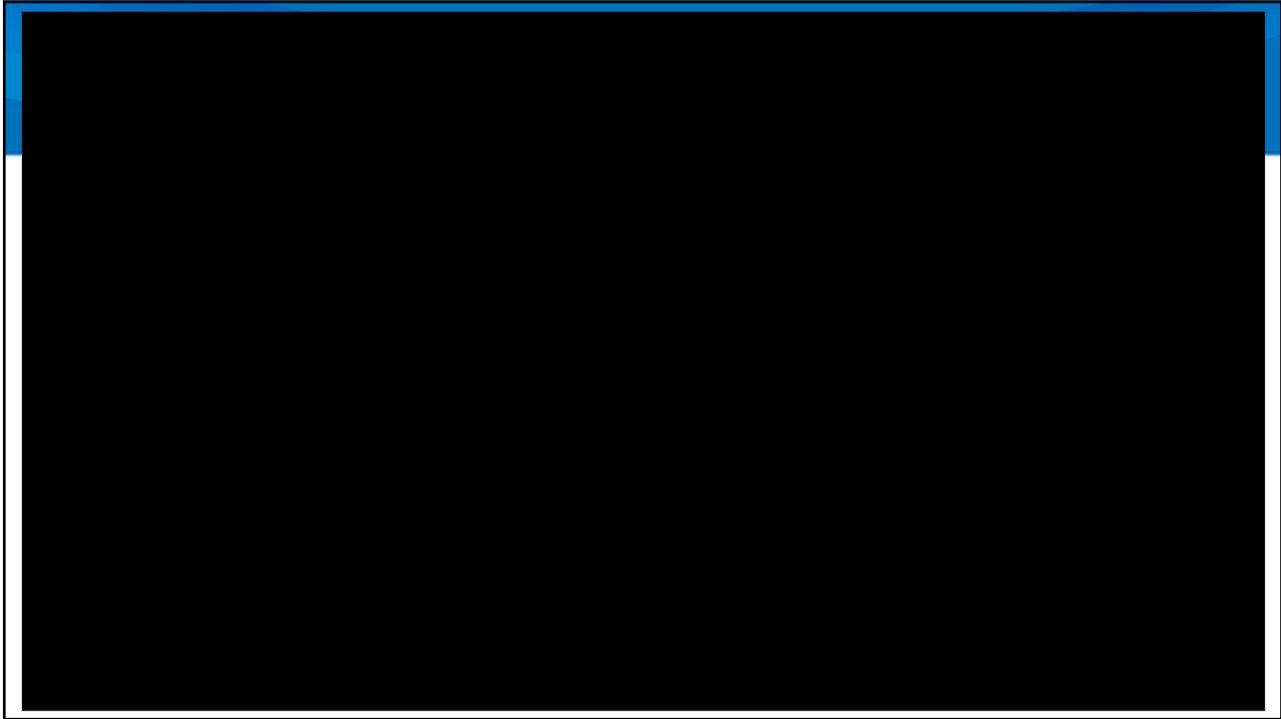
# ACSI Student Assessment Program Offerings



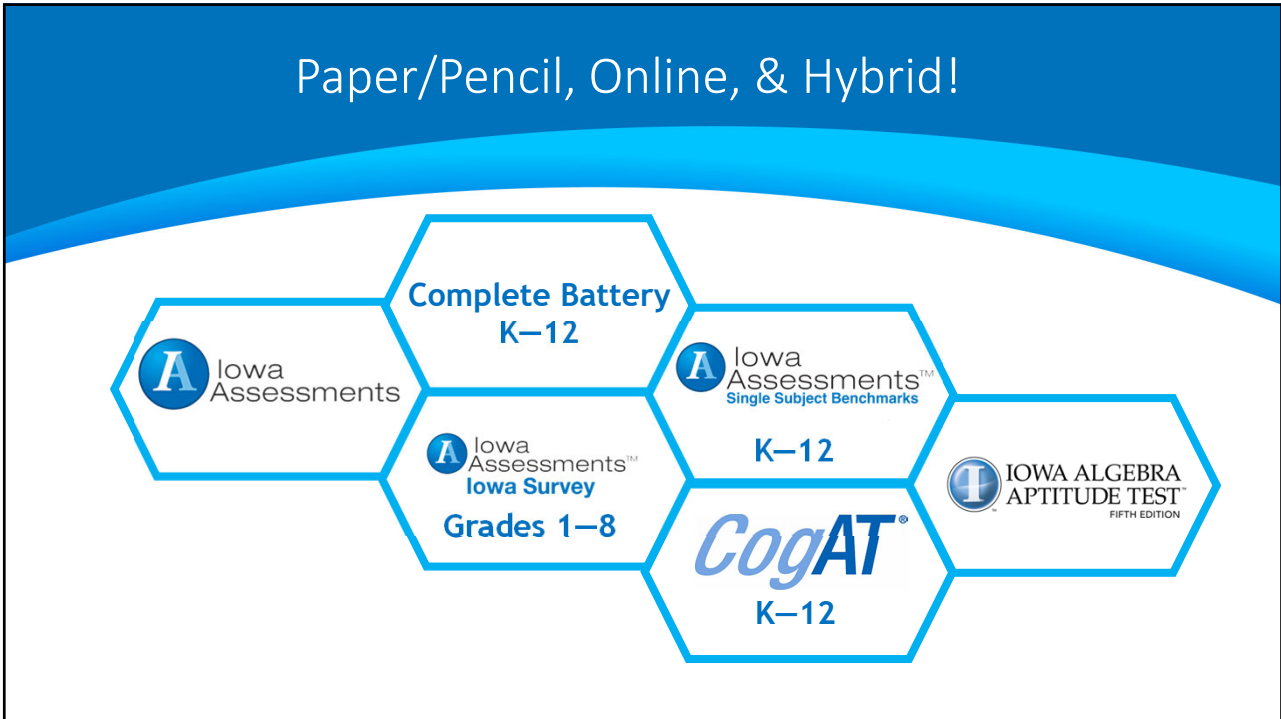
5



6

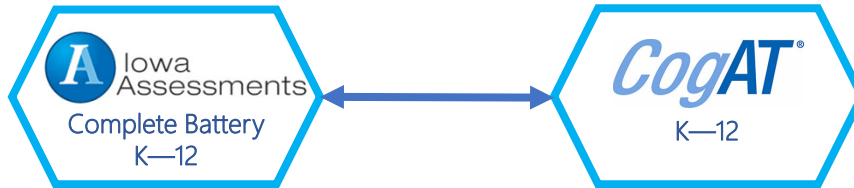


7



8

## Connected Approach



- Best in class standardized achievement test with enhanced scores
- Form G for K—8 and equivalent Form E for 9—12
- DataManager, a robust reporting system with over 42 reports
- The Cognitive Abilities Test that measures Verbal, Quantitative, and Nonverbal reasoning
- CogAT dashboard with a Student Ability Profile for instructional guidance
- Differentiated Instruction Report to drive classroom instruction and planning


9


## Placement, Admissions, & Benchmark Tests



- Same Reading and Math subtests as the Complete Battery
- Option to include Vocabulary and Math Computation
- Multiple fixed forms to monitor growth two to three times during the year
- Abbreviated version of the Iowa Assessments Complete Battery
- Assesses Reading, Language or Written Expression, and Mathematics
- Administration time takes less two hours
- Snapshot of student performance

10




**ACSI** 

**Riverside**  
Training Academy

Online testing support  
available  
24/7!

- Personalized consultations
- Customized resources
- Dedicated implementation support
- 24/7 access to the following resources:
  - Technical readiness, data setup, & proctor training
  - In-depth reports training
  - Checklists, FAQs, and much more!

11



**IOWA ALGEBRA  
APTITUDE TEST™**  
FIFTH EDITION

- Alignment to the National Council of Teacher of Mathematics (NCTM) standards
- Organized into four parts:
  - Pre-Algebraic Number Skills and Concepts
  - Interpreting Mathematical Information
  - Representing Relationships
  - Using Symbols
- Administration that fits into one class period for efficient delivery.
- Two parallel forms enabling pre- and post-testing
- Paper/pencil and online administration

For details, email [assessmentssupport@acsi.org](mailto:assessmentssupport@acsi.org).

12

College & Career Readiness Assessments  
For PreACT, select the ACT US ACSI 2023-2024 PREACT 8/9 & PREACT to enroll!



- Assess as soon as grade 8 to set an early baseline for students
- Provide early ACT test practice
- Receive predicted PreACT and ACT scores with one test
- Paper/pencil administration
- Online only administration
- Can be used for high-stakes or accountability

For details, email [assessmentssupport@acsi.org](mailto:assessmentssupport@acsi.org).

13

The logo for 'The ACT' is centered. 'The' is in red, and 'ACT' is in a large, bold, dark blue serif font with a red swoosh under the 'A'.

For ACT District Testing, select Private School, check the box that you are a member of ACSI.

- Administer the ACT in a familiar environment
- Raise college awareness
- Collect school summative scores and longitudinal student data
- Paper/pencil and online administration

For details, email [assessmentssupport@acsi.org](mailto:assessmentssupport@acsi.org).

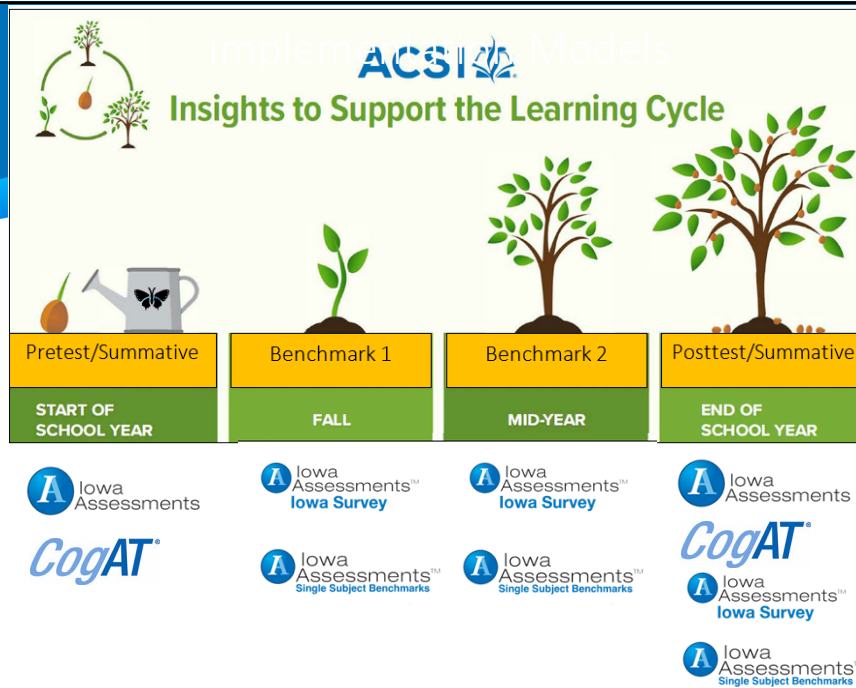
14

# ACT<sup>®</sup> Online Prep

- Help students prepare with ACT<sup>®</sup> Online Prep—an engaging, interactive test prep program developed by the makers of the ACT.
- Includes 2 full length practice tests as well as thousands of additional practice questions.
- Students get flexible customized learning plans.
- Educators can track student progress at individual and aggregate levels.

For details, email [assessmentssupport@acsi.org](mailto:assessmentssupport@acsi.org).

15



16



Questions to ponder when deciding on an assessment program for your school

- What is your purpose for assessment?
- What assessment format do you prefer?
- What grade levels do you assess?
- What subjects do you want to assess?
- What standards/objectives do you want to assess?
- What type of data do you need?

17

Assessment Matrix Worksheet

	Format		Purpose							Grade Levels													
	Paper	Online	Summative	Benchmark	Admissions	Gifted & Talented Identification	Identify & Address Learning Loss	State/Scholarship Requirement	College Entrance	Placement	K	1	2	3	4	5	6	7	8	9	10	11	12
ACSI Bible Assessment	✓	✓	✓								✓	✓	✓	✓	✓	✓	✓	✓	✓	✓	✓	✓	✓
Iowa Complete	✓	✓	✓		✓		✓	✓			✓	✓	✓	✓	✓	✓	✓	✓	✓	✓	✓	✓	✓
CogAT	✓	✓	✓		✓	✓				✓	✓	✓	✓	✓	✓	✓	✓	✓	✓	✓	✓	✓	✓
Iowa Single Subject		✓		✓	✓		✓			✓	✓	✓	✓	✓	✓	✓	✓	✓	✓	✓	✓	✓	✓
Iowa Survey	✓	✓		✓	✓					✓	✓	✓	✓	✓	✓	✓	✓	✓	✓	✓			
IAAT	✓			✓	✓					✓									✓	✓	✓		
ACT District Testing	✓	✓	✓					✓	✓													✓	✓
Pre-ACT	✓	✓	✓							✓												✓	✓
PreACT 8/9	✓	✓	✓							✓												✓	✓
Other _____																							

	Data					Standards/Objectives			Subjects Available									
	NRT	CRT	College Readiness	Real Time Results	Cognitive Abilities	College & Career Readiness	National	Common Core	Consensus Curriculum	Reading	Math	Language	Science	Social Studies	Vocabulary	Computation	Spelling/Punctuation	Bible
ACSI Bible Assessment	✓	✓		✓				✓										✓
Iowa Complete	✓	✓	✓				✓		✓	✓	✓	✓	✓	✓	✓	✓	✓	
CogAT	✓				✓		✓											
Iowa Single Subject	✓	✓	✓				✓		✓	✓				✓	✓			
Iowa Survey	✓	✓					✓		✓	✓	✓							
IAAT		✓					✓			✓								
ACT District Testing	✓	✓	✓			✓			✓	✓	✓	✓						
Pre-ACT	✓	✓	✓			✓			✓	✓	✓	✓						
PreACT 8/9	✓	✓	✓			✓			✓	✓	✓	✓						
Other _____																		
Other _____																		

18



ACSI  
STRONGER TOGETHER

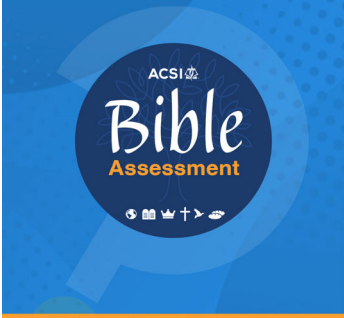
Professional Development

# Professional Development

Complete a training request form today!  
<https://your.acsi.org/DataTrainingRequests>

- Custom training benefits include:
  - Basic score interpretation
  - Report navigation and interpretation
  - Analyze results to improve student achievement
  - Accreditation requirements for data analysis
- 24/7 Community access to critical information and online testing support
- Personalized consultations


19




ACSI  
**Bible Assessment**  
Measure Biblical Literacy To Inform Instruction

## Join us for our upcoming webinar!

Learn more about the ACSI Bible Assessment!  
Measure Biblical Literacy to Inform Instruction  
Wednesday, March 13<sup>th</sup>@11am MT



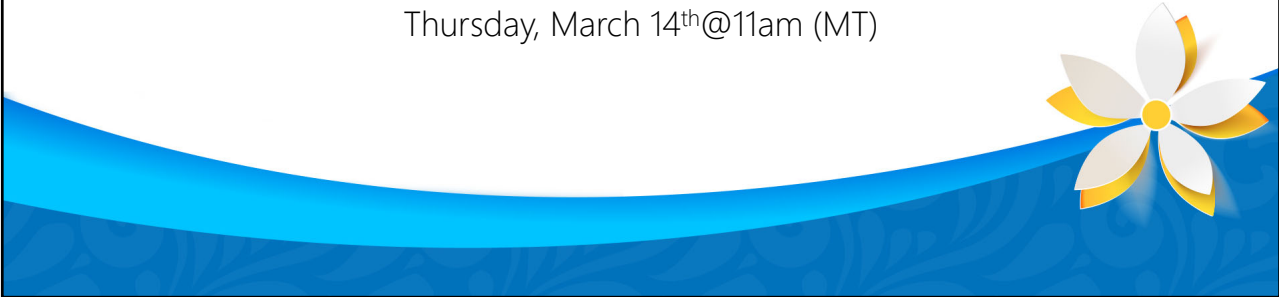
20




Join us for our upcoming webinars!

K—12 Iowa Assessments—Assess Less. Measure More.

Thursday, March 14<sup>th</sup>@11am (MT)



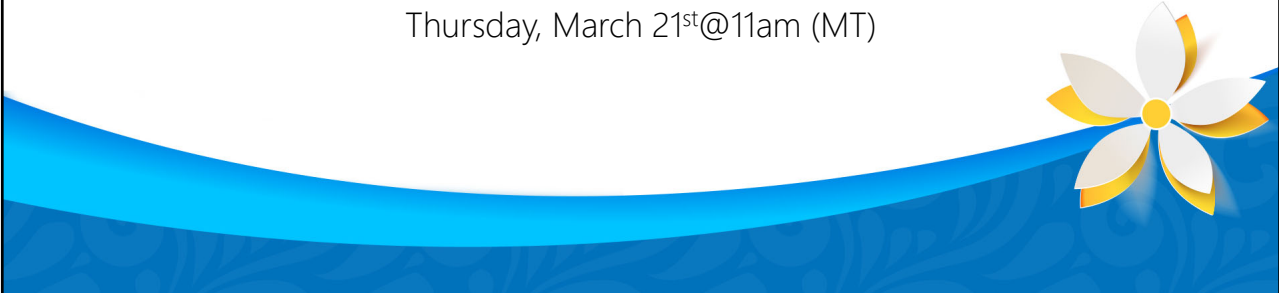
21




Join us for our upcoming webinars!

Cognitive Abilities Test (CogAT)—Ability Insights for All Educators

Thursday, March 21<sup>st</sup>@11am (MT)



22

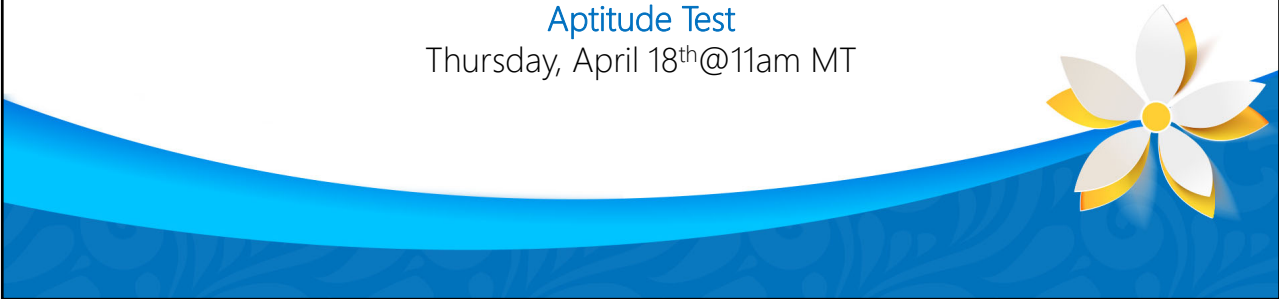


IOWA ALGEBRA  
APTITUDE TEST™  
FIFTH EDITION

Join us for our upcoming webinar!

Determine Algebra Readiness with the Iowa Algebra  
Aptitude Test

Thursday, April 18<sup>th</sup>@11am MT



23



Iowa Assessments™  
Single Subject Benchmarks



Iowa Assessments™  
Iowa Survey

Join us for our upcoming webinar!

Benchmark Testing Options with Iowa Assessments  
Single Subjects and Iowa Survey

Thursday, April 25<sup>th</sup>@11am MT



24



Join us for our upcoming webinar!

ACT District Testing and Test Prep  
Thursday, May 2<sup>nd</sup>@11am MT



25

### Register for an event!

All webinars are at 11 am Mountain.

To register for an event, go to [your.acsi.org](https://your.acsi.org), select Assessments, and select Upcoming Webinars.

### Check out our past webinars!

Go to [your.acsi.org](https://your.acsi.org), select Explore Our Videos, and view any of our recorded webinars.

26

Thank you  
for  
joining us today!



## Student Assessment Program

Contact us to learn more  
about any of these services.

Connect with the Student Assessment Team!

Submit our form at [your.acsi.org/SAPTeam](https://your.acsi.org/SAPTeam),

email [assessmentsupport@acsi.org](mailto:assessmentsupport@acsi.org), or call

ACSI Care Team at 1.800.367.0798.