



Logging into ACSI's Community and Locating EE Webinars

ACSI Early education members have access to our library of early education recorded webinars for professional development training in our [EE group in Community](#). Gain insight from leaders in the field of Christian early education. Each training can be viewed individually or in a group setting. **Upon completion of a training, members will submit a Post Training Evaluation and Reflection/CEU Claim Form to receive a continuing education (CEU) certificate for one clock hour of training (.17 CEUs).** Please allow up to two weeks for CEU certificates to be available for printing.

- **If you know your ACSI account log-in information** (username/password), follow the instructions in [Section 1](#).
- **If you've never logged into your ACSI account or Community**, follow the instructions in [Section 2](#).

Section 1: Logging into Community with your ACSI username/name

1. Visit acsi.org
2. Click on **Community**



3. Click the **Login** button in upper right of screen



- From the Community Home Page, choose **Early Education** from the Communities drop-down menu.



- Access EE Webinars:** From the Early Education Community page, access EE Webinars by clicking on **one of two links**:

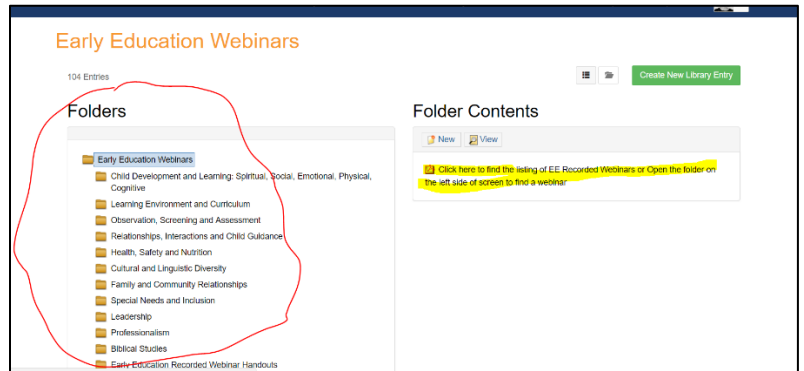
- "by browsing a library categorized by topic" (directs you to a topical/category list to choose titles from)
- "directly from a list of titles and descriptions" (directly links to each webinar via an alphabetical list)




Early Education Recorded Webinars

Access recorded webinars:

- [by browsing a library categorized by topic](#)
- [directly from a list of titles and descriptions](#)





ACSI Early Education Recorded Webinars

Recorded webinars are listed alphabetically. Click on a title to access the recorded session.

[Administrative Leadership with Dr. Vernard Gant](#)
 The times are dictating the need for transformative leadership. Transformative leaders' function as change agents who leave an indelible mark upon those they lead. Join ACSI's Dr. Vernard Gant as he looks at the characteristics, distinctions, and development of a transformative leader with a focus on the changing dynamics of Christian schools and Christian school education. This is particularly geared toward early education program leaders while targeting and serving children who are academically disenfranchised, culturally different, and/or economically disadvantaged. This webinar is not about how to efficiently run or operate a school, but on how to effectively lead one. [Leadership](#)

[And the Walls Come Tumblin' Down: Supporting Children's Spiritual Development Through Play with Dr. Joyce Myers](#)
 Participants will explore the ways that play supports young children's spiritual development. We will discuss ways that spiritual development is supported through play in both the cognitive and social/emotional domains of development. Specific examples will be given to support application in the classroom. [Child Development and Learning](#); [Learning Environment and Curriculum](#)

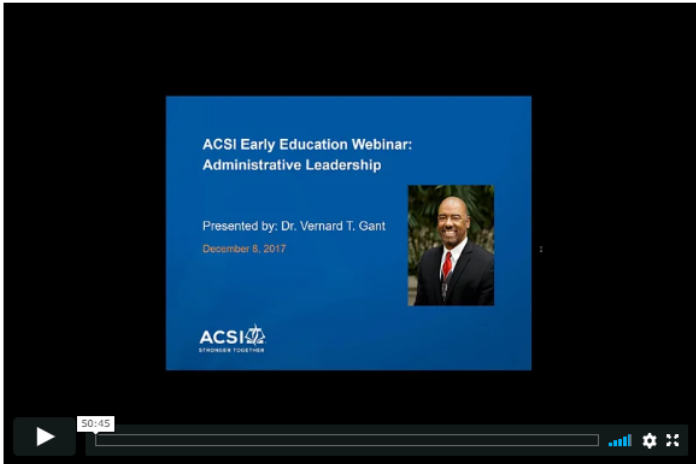
[An Action Plan for Early Education Leaders - Managing Effective Change in Your Program - Part 1 with Sara Jo Dillard](#)
 ACSI's Director of Early Education Resources, Sara Jo Dillard, kicks off our Leadership Track with a two-part webinar that will equip you to address changes in your early education program. Change in early education is inevitable and necessary for educational and cultural relevance, financial stability, and a

6. All handouts are linked to each webinar and are downloadable/printable.

07-02-2019 05:09:21 AM

The times are dictating the need for transformative leadership. Transformative leaders function as change agents who leave an indelible mark upon those they lead. Join ACSI's Dr. Vernard Gant as he looks at the characteristics, distinctions, and development of a transformative leader with a focus on the changing dynamics of Christian schools and Christian school education. This is particularly geared toward early education program leaders while targeting and serving children who are academically disenfranchised, culturally different, and/or economically disadvantaged. This webinar is not about how to efficiently run or operate a school, but on how to effectively lead one.

Actions ▾
Statistics
0 Favorited
33 Views
0 Files
0 Shares
0 Downloads



Handout: [Post Training Evaluation and Reflection](#)

CEU's will be uploaded to VPP within 2 weeks after receiving the post training evaluation.

7. **How to Earn CEUs:** After watching a webinar, be sure to complete and submit the Post Training Evaluation and Reflection/CEU Claim Form. This is the only way to earn a CEU/clock hour certificate.

Section 2: First-time ever logging into ACSI's Community

1. You can log into Community from two locations and set-up your universal password. This reset process only needs to occur the first time you log into your profile for ACSI. Visit either by:

- (1) The [acsi.org](https://www.acsi.org) website



- (2) Going directly to the <https://community.acsi.org> website



2. Click the **Login** button in upper right of screen



3. Click the “*I forgot my password*” button and fill in your email address. Click the **Find My User Account** button.

Account Login ACSI

Important Message
If you have not logged in to acsi.org since June 4, click "I forgot my password" below. You will receive an email with a link to reset your password.

Email Address

Password

Sign In

Keep me signed in

I forgot my user name
 I forgot my password
 Contact Member Care

*Please enter EITHER your e-mail address OR your user name.

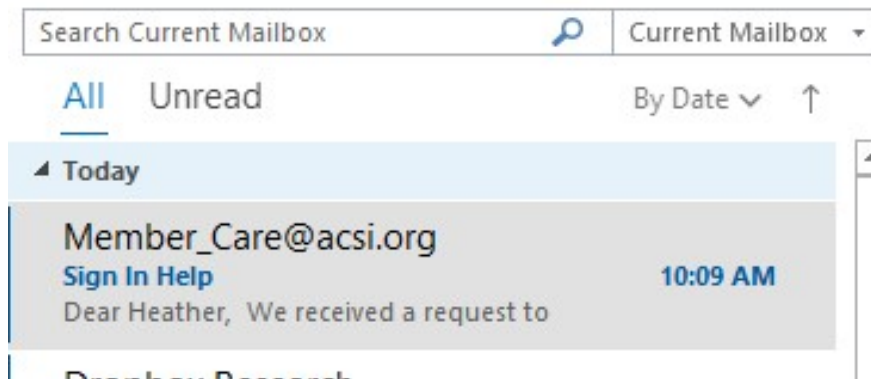
E-mail Address

OR User Name, if different

Find My User Account

New User? Create an Account Here
Create Account

4. Click the link sent to you via email.



5. Fill in the required fields and click **Save Changes**.

[Root](#) > [Home](#) > [Reset Password](#)

Password Requirements

For passwords: length = 8, numeric characters = 1, upper case characters = 1, lower case characters = 1.

User name *
heather_wendt@acsi.org

Password *

Please Confirm New Password

Secret Question

What is the name of your favorite pet? ▼

Secret Answer *

Please confirm secret answer

Before resetting your password we need to verify that you are a real person. To confirm that you are really seeing this screen please type the characters you see in this image into the box below.

I Y R H I

If you can't read the characters click [here](#) to generate a new image

6. Upon logging in, you will need to type **community.acsi.org** in the URL



7. This will bring you to the Terms and Conditions page. Click **agree**, and you are now on the Community Home Page.



- From the **Community Home Page**, choose the **Communities drop-down menu**, then select **Early Education** from the list of Communities and click the blue “Join” button. The Early Education group will now be listed under “My Communities” in the blue tool bar at the top of Community.



All Communities

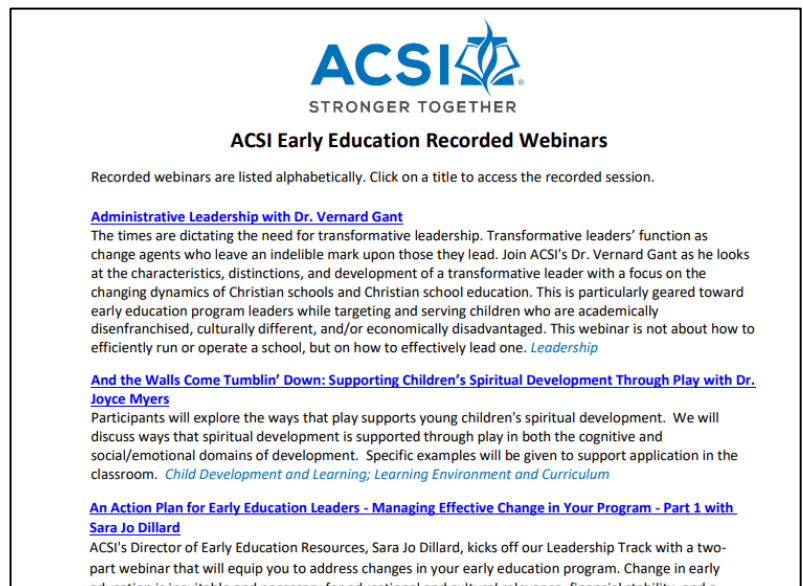
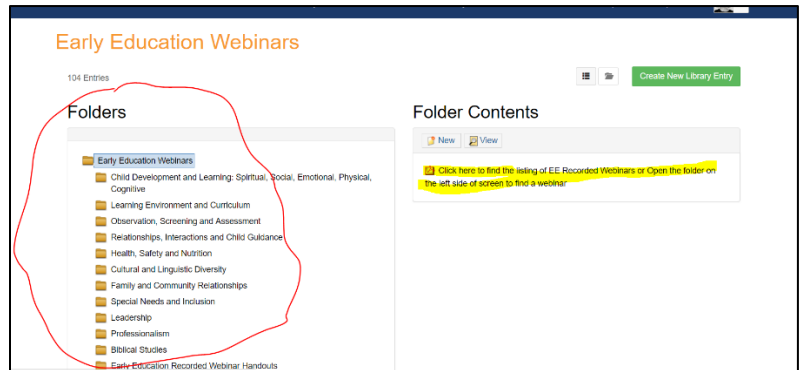
- Access EE Webinars:** From the Early Education Community page, access EE Webinars by clicking **one of two links**:
 - “by browsing a library categorized by topic” (directs you to a topical/category list to choose titles from)
 - “directly from a list of titles and descriptions” (directly links to each webinar via an alphabetical list)



Early Education Recorded Webinars

Access recorded webinars:

- [by browsing a library categorized by topic](#)
- [directly from a list of titles and descriptions](#)

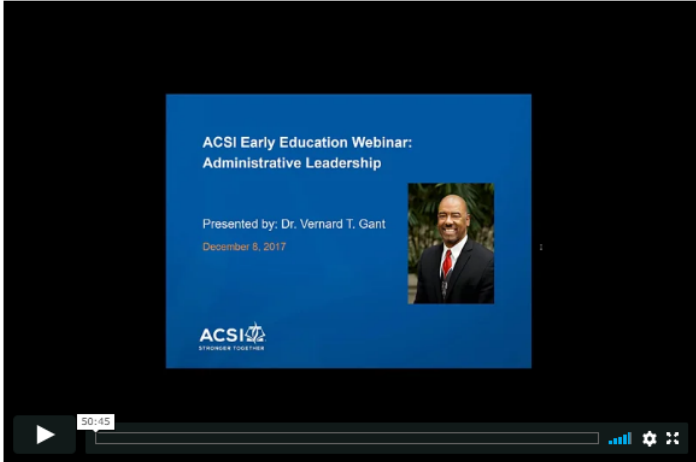


10. All handouts are linked to each webinar and are downloadable/printable.

07-02-2019 05:09:21 AM

The times are dictating the need for transformative leadership. Transformative leaders function as change agents who leave an indelible mark upon those they lead. Join ACSI's Dr. Vernard Gant as he looks at the characteristics, distinctions, and development of a transformative leader with a focus on the changing dynamics of Christian schools and Christian school education. This is particularly geared toward early education program leaders while targeting and serving children who are academically disenfranchised, culturally different, and/or economically disadvantaged. This webinar is not about how to efficiently run or operate a school, but on how to effectively lead one.

Actions ▾
Statistics
0 Favored
33 Views
0 Files
0 Shares
0 Downloads



Handout: [Post Training Evaluation and Reflection](#)

CEU's will be uploaded to VPP within 2 weeks after receiving the post training evaluation.

11. **How to Earn CEUs:** After watching a webinar, be sure to complete and submit the Post Training Evaluation and Reflection/CEU Claim Form. This is the only way to earn a CEU/clock hour certificate.

Questions? Contact the Early Education department at earlyeducation@acsi.org.